



ISM-PD9500 Smart Lock For Sliding Doors

- Smart mortise locks that can be remotely locked, unlocked, and programmed from anywhere in the world
- Offers property owners and managers a platform to create an all-inclusive access management hub with unlimited properties, openings, and users
- Patented anti-binding winged deadbolt provides smooth operation for safety and security

APPLICATION

Perfect keyless solution across a variety of applications, including commercial, mixed use, multi-tenant offices, and commercial/retail facilities. Commercial mortise lock that can be remotely locked, unlocked, and programmed using smartphone via Bluetooth or Wi-Fi gateway. Intuitive mobile app supports multiple users and properties with real-time access management.

LOCK SPECIFICATIONS

Door Thickness 1-3/4" (45mm) Standard

Backset 2-3/4" (70mm)
2-1/2" (63.5mm)

Center to Center Distance Lever to cylinder:
3-7/8" (98mm)
Lever to thumbturn:
2-11/16" (68mm)

Cylinder Schlage C keyway 6 pin, 1-1/4" mortise cylinder with 2 keys (standard). SFIC and LFIC housing and cores available

CAM CAM01-SCL Clover Cam

Material Trim: Stainless Steel
Lockcase: Heavy Gauge Steel
Deadbolt: Stainless Steel
Faceplate/Strike: Stainless Steel
Cylinder: Solid Brass

FEATURES

- Motor-driven deadbolt provides auto-locking function
- Multi-credential support: Passcodes, RFID FOB/Card/Wristband, and Smart Phone
- Simple Touch-to-Lock, no device or keys needed for secure opening
- Remote access using Wi-Fi or POE gateway
- High Frequency RF13.56 MHz card, fob, wristband
- Passage mode can be activated with interior button
- Unit powered by 4 x AA alkaline batteries with secondary 9V power source for emergency access
- Remote Access and Management via Wi-Fi and Low Energy Bluetooth
- User Capacity: 2000 Total (1000 RF/Passcode and 1000 Mobile)
- Inside Egress lever retracts the deadbolt and the latch at the same time
- Audit trails with 100,000 records shows all Lock and Unlock activities

FINISH

- 32D Satin Stainless Steel
- 32 Bright Stainless Steel
- 19G Graphite Black
- PVD4 Satin Brass available in 205, 221, 243, 244, 276, 318, 319, 320, 321, 346 and 509 levers designs
- CeraMax Ceramic Coating: C19G Graphite Black, C19 Flat Black, CGY Stormy Grey, CDB Dark Bronze
- Please see Finish Solutions on INOX website for special order finishes

Outside Trim

RFID e-Keys Reader and Touch-To-Lock

Mechanical Key with Standard Mortise or Interchangeable Core Cylinder



Twelve Standard Stainless Steel X-Series Levers and Designer Surface Pull Options

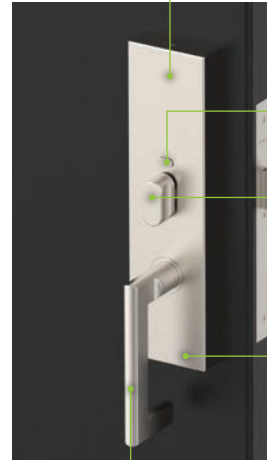
Inside Trim

Communicates with Smartphone via Low Energy Bluetooth

Toggle Button for Passage and Privacy Mode

Thumbturn to Mechanically Lock & Unlock Deadbolt

Full Conceal Plate Escutcheon Covers 4 x AA Batteries, Electronics and Motor



Inside Lever Supports Single Action Emergency Egress

APP CAPABILITIES

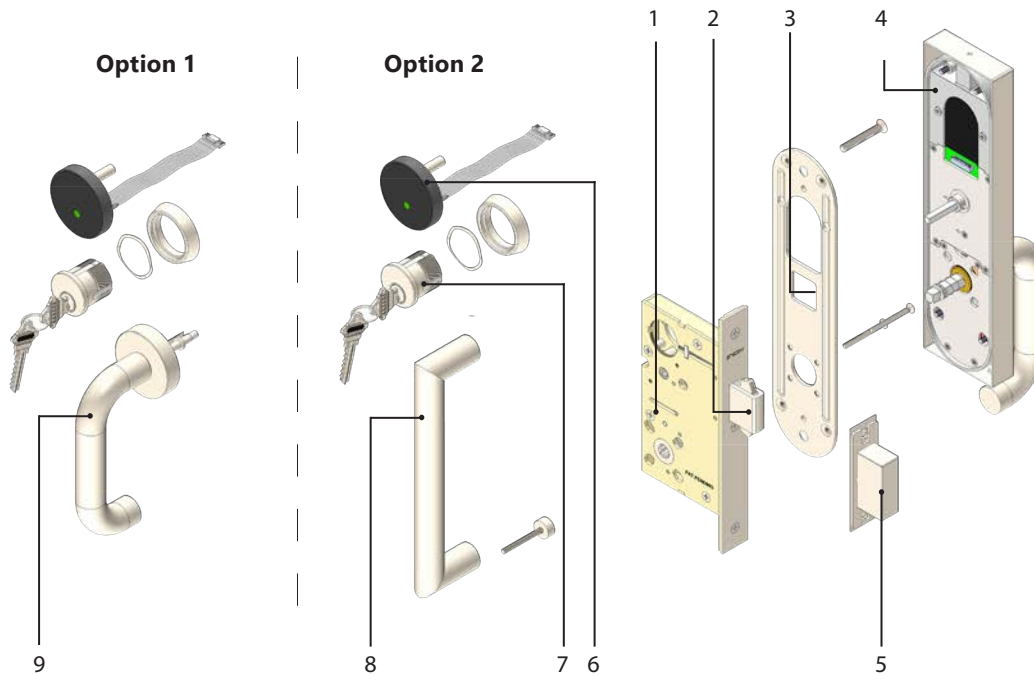
- Multi-level user Access and Permission Management
- Remote Locking and Unlocking via BLE/Wi-Fi gateway
- Audit trails with 100,000 records shows all Lock and Unlock activities
- Add, remove, edit and schedule RFID credentials
- Bluetooth, RFID, and Passcode option on Keypad
- Door Positioning Sensor [DPS] with optional cloud monitoring features available on the App
- System supports 3 type of Keypad passcodes;
 - Auto generated passcode
 - User-defined passcodes
 - 24-hour Valid one-time passcode
- Passage and Privacy Mode: One-time and schedule
- Property and Door Information Management
- Cloud-Based Encrypted Authentication
- 2-step Verification Available for Added Security
- Over the Air (OTA) Firmware Update
- Notification on locking abnormalities and battery level
- Global Search Function
- App and Web-based Solutions

Download the INOX SMART App



ISM9500 SMART SLIDING DOOR MORTISE LOCK

COMPONENTS



Description

- | | |
|---|---|
| 1 | PD95 lockcase and faceplate; 2-3/4" backset PD95-234 or 2-1/2" backset PD95-212 |
| 2 | 1" (25.4mm) heavy-duty brass bolt throw with self-retracting non-marring hooks |
| 3 | Mounting sub-plate |
| 4 | Interior stainless steel plate with choice of X Series lever designs |
| 5 | Adjustable strike for deadbolt; up to 1/4" vertical adjustability (6.35mm) |
| 6 | Round Reader |
| 7 | Schlage C keyway, 6 pin 1-1/4" mortise cylinder |
| 8 | Exterior Surface Pull |
| 9 | Exterior heavy-duty stainless steel cast rose with choice of X Series lever designs |

ISM95 Trim options:

Option 1: Interior SFR plate with choice of lever sectional with X series rose and lever on the outside

Option 2: Interior SFR plate with choice of lever sectional with Surface Pull on the outside

Option 1	Option 2	Exterior
✓	✓	Reader
✓	✓	Cylinder
✓		X Series Rose with Lever
	✓	Surface Pull

HOW TO ORDER SMART SLIDING DOOR MORTISE LOCK

HOW TO ORDER LOCKSETS

Use the sequence below to order or specify mortise locksets. Please see price book for parts or additional service upcharges.

Outside Trim			Inside Trim			Lock	Backset	Reader	Bluetooth	Cylinder	Thumbturn	Finish	Handing
Smart	Rose	Lever	Plate	Lever	Lock	Backset	Reader	Bluetooth	Cylinder	Thumbturn	Finish	Handing	
ISM	-XGT	202	-SFR	202	-PD9550	A	-R1	-BRW	-S6		-32D	-LH	
	1	2	3	2	4	5	6		7	8	9	10	

ROSE	LEVER	PLATE	LOCK	BACKSET
 XGT XGS	 201 202 205 221 243 244 276 318 319 320 321 345 346	 SFR	Entry	Backset Blank = 2-3/4" Backset A = 2-1/2"
				6 READER R1

7 CYLINDER AND HOUSING (INCLUDES COLLAR)

LC = Less Cylinder



Blank = Standard Mortise 1-1/4" Cylinder



-S6 = Small Format Interchangeable Cylinder (SFIC) Housing 1-1/4", 6-Pin, Less Core, L Clover Cam

-S7 = Small Format Interchangeable Cylinder (SFIC) Housing 1-3/8", 7-Pin, Less Core, L Clover Cam

-L6 = Large Format Interchangeable Cylinder (LFIC) Housing 1-1/2", 6-Pin, Less Core, L Clover Cam



Order IC Cores and Thick Door Kits (TDKs) separately - See Price Book

8 THUMBTURN



TT02



Blank = TT04

9 FINISH

Standard:



32D



C19G



C19



CGY



CDB



32



PVD4



19G

PVD4 is available for 205, 221, 243, 244, 276, 318, 319, 320, 321, 346 and 509 lever designs.

10 HANDING

RH = Right Hand








LH = Left Hand

HOW TO ORDER SMART SLIDING DOOR MORTISE LOCK

HOW TO ORDER LOCKSETS

Use the sequence below to order or specify mortise locksets.

Surface Pull will need to be ordered as a separate line item. Please see price book for list of available pulls.

Smart	Surface Pull	Plate	Lever	Lock	Backset	Reader	Bluetooth	Cylinder	Thumbturn	Finish	Handing	
ISM	-PH	-SFR	202	-PD9550	A	-R1	-BRW	-S6		-32D	-LH	
	1	2	3	4	5	6		7	8	9	10	
TRIM	PLATE	LEVER	LOCK				BACKSET					
PH* - PHIX Pull							Entry	Backset Blank = 2-3/4" Backset A = 2-1/2"				
	SFR	201	202	205	221	243						
		244	276	318	319	320						
		321	345	346								
							6	READER				
												
								R1				

*Order surface pull separately - See Price Book for available pulls and finishes

7 CYLINDER AND HOUSING (INCLUDES COLLAR)

LC = Less Cylinder



Blank = Standard Mortise 1-1/4" Cylinder



-S6 = Small Format Interchangeable Cylinder (SFIC) Housing 1-1/4", 6-Pin, Less Core, L Clover Cam

-S7 = Small Format Interchangeable Cylinder (SFIC) Housing 1-3/8", 7-Pin, Less Core, L Clover Cam

-L6 = Large Format Interchangeable Cylinder (LFIC) Housing 1-1/2", 6-Pin, Less Core, L Clover Cam



Order IC Cores and Thick Door Kits (TDKs) separately - See Price Book

8 THUMBTURN



TT02



Blank = TT04

9 FINISH

Standard:



32D



C19G



C19



CGY



CDB



32



PVD4

PVD4 is available for PHIX330.512.8 ADA Pull. For custom finish requests, please contact Sales.

10 HANDING

RH = Right Hand

LH = Left Hand