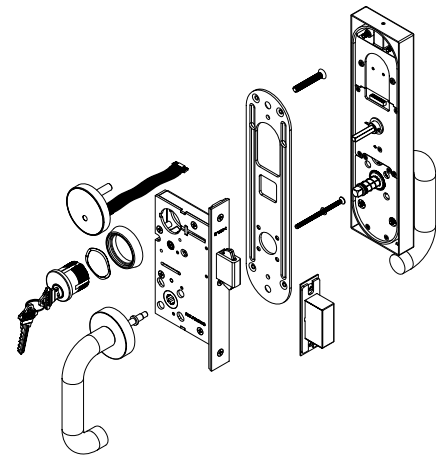


Installation Instructions

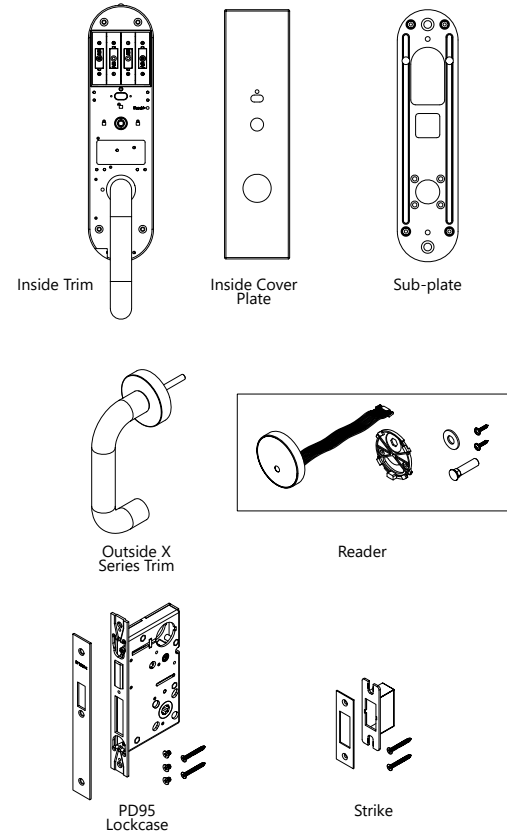


**ISM95
Smart Lock with X Series Levers by SFR Plate
for Sliding Doors**

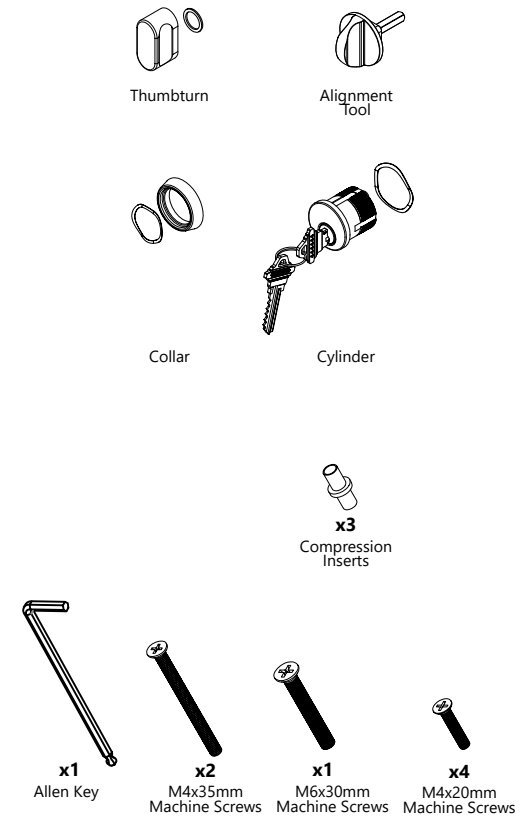
This product is intended to be installed in accordance with the local authority having jurisdiction (AHJ) and the National Electric Code, NFPA 70.

PM-ISISM95XH
V20230508

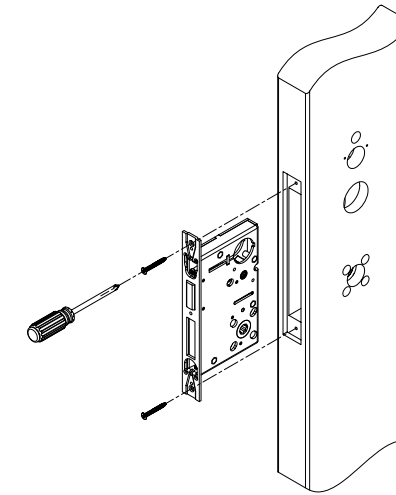
Components List



Components List (continued)

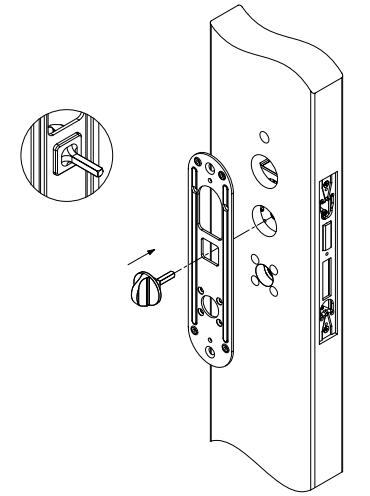


Step 1: Install Mortise Lockcase



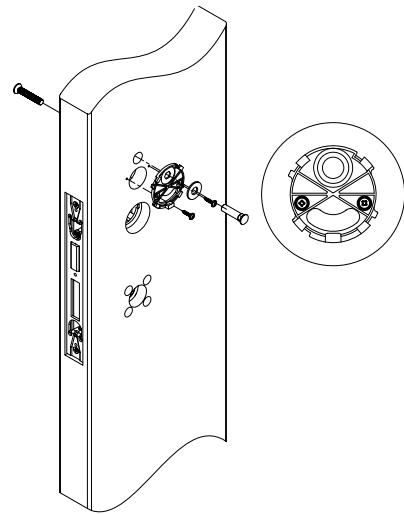
Once door prep is complete, install mortise lockcase. Do not tighten faceplate screws on lockcase until you have installed the mortise cylinder.

Step 2: Align Interior Sub-plate and Deadbolt Hub



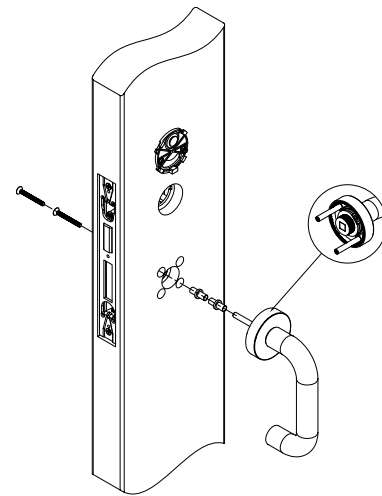
Firmly insert alignment tool into square cut-out of sub-plate and into thumbturn spindle hub of mortise lock.

Step 3: Install Base to Reader



Install base of reader with thru-bolt. Ensure base is horizontally level, then tighten thru-bolt. Tighten wood screws with screwdriver.

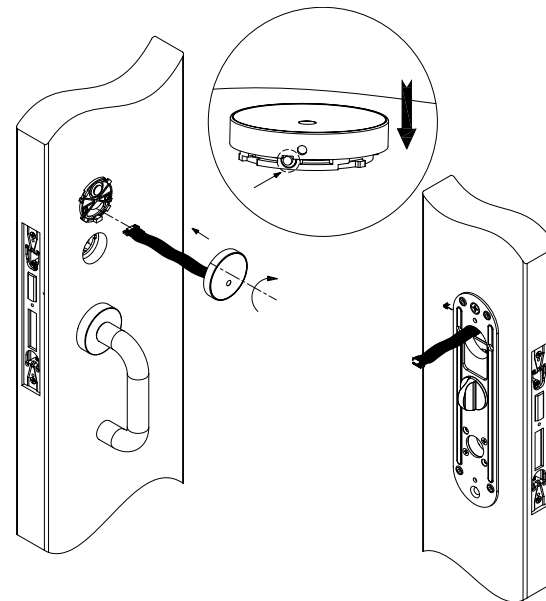
Step 4: Install Outside Trim



Install the compression inserts to lock case from outside and then install the exterior lever.

Make sure the dummy spindle is installed properly and the set screw tightened before install the outside trim.

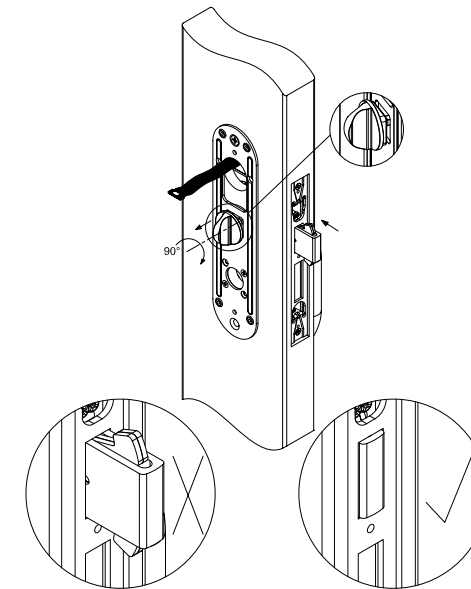
Step 5: Mount Outside Reader



Guide wire through opening and mount reader. Rotate reader clockwise; when you hear it "click" the reader is properly installed.

Status Indicator light should be positioned bottom center as shown.

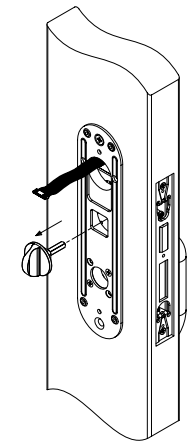
Step 6: Test Mortise Lockcase Deadbolt



Once sub-plate is properly installed, use alignment tool to throw and retract the deadbolt.

WARNING: For initial setting, deadbolt must be in retracted position.

Test Mortise Lockcase Deadbolt (continued)

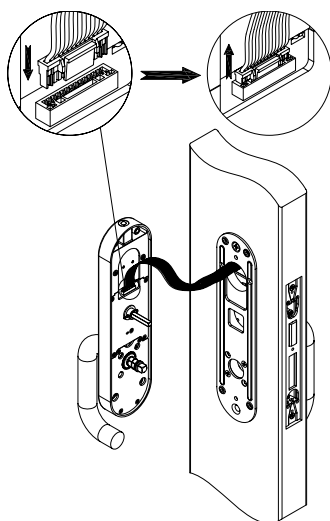


After aligning thumbturn spindle with sub-plate, slightly pull alignment tool from square cut-out enough so that it can be turned 90° to test deadbolt operation.

Use turn knob to throw deadbolt in and out of lock case; operation should be smooth.

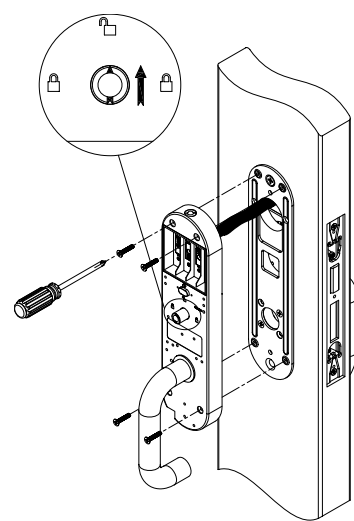
If deadbolt operation is not smooth, adjust sub-plate position up or down; loosen or remove and reinstall sub-plate screw if necessary. Re-test deadbolt operation with alignment tool until action is smooth, then remove alignment tool.

Step 7: Connect Wire to Interior



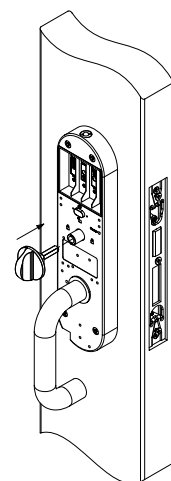
Connect outside Reader wire to inside trim molex connector. To separate wires press clip on the connector.

Step 8: Mount Interior Trim



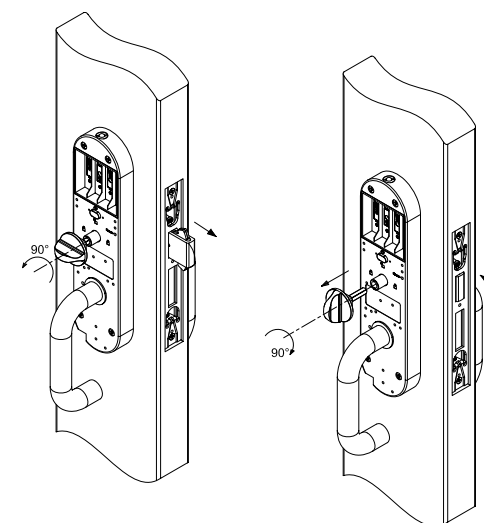
Turn arrow of inside plate spindle to "unlocked" icon as shown.
Conceal wire by tucking it into to door through the internal sub-plate.
Insert and tighten four M4x20 mm screws to sub-plate.
NOTE: Be sure to tuck wires into hole to ensure wires are not severed if plate presses against them.

Step 9: Repeat Test of Mortise Deadbolt



Use alignment tool to test deadbolt operation after installing inside escutcheon.

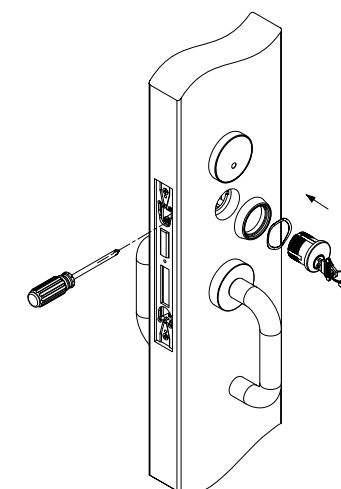
Step 10: Trouble-Shooting Mortise Deadbolt



Ensure deadbolt can be smoothly thrown and retracted. If action is not smooth, repeat earlier steps to adjust the sub-plate.

NOTE: Retract deadbolt before removing alignment tool.

Step 11: Install Cylinder



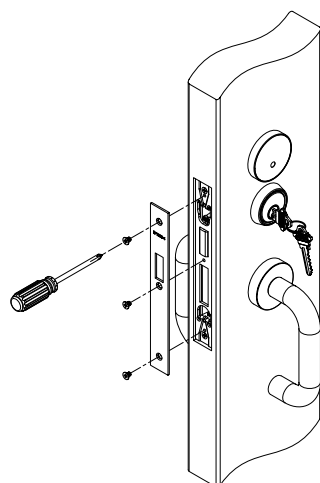
Screw cylinder into outside escutcheon, ensuring key hole is properly oriented and in lower position.

Insert a screwdriver through lock face to tighten yoke and secure cylinder into position.

Use key to throw and retract deadbolt.

NOTE: Do not overtighten the screw, as it can cause the cylinder to shift position.

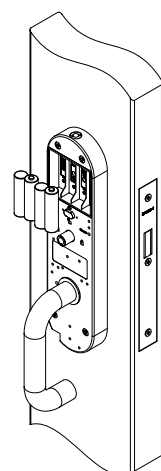
Step 12: Install Faceplate



Ensure that the deadbolt can be smoothly thrown and retracted. If action is not smooth, repeat Step 10 to adjust the sub-plate.

NOTE: Retract deadbolt before removing the alignment tool.

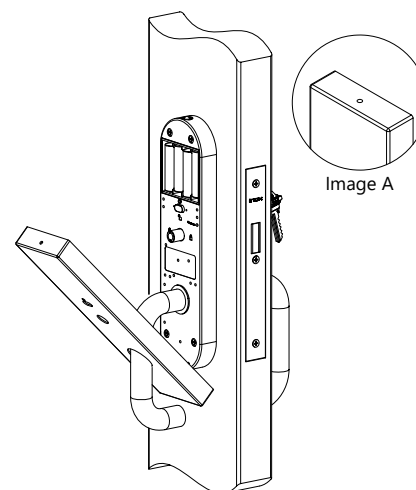
Step 13: Install Batteries



Ensure deadbolt is in retracted position before installing four AA batteries. Align batteries to correct polarity in compartment.

NOTE: There will be a short delay, but lock will be active when you hear the audio and see the light confirmation.

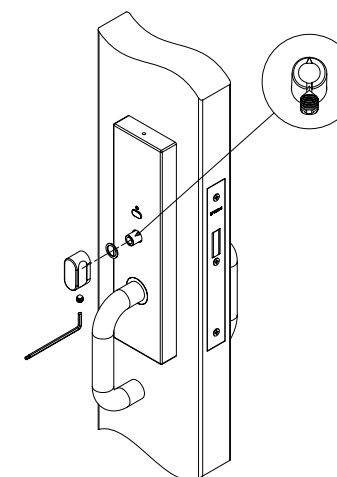
Step 14: Mount Interior Plate Cover



Slide interior cover plate over lever, push onto inside escutcheon, and ensure cover plate is securely attached by ball bearing on top of escutcheon (Image A).

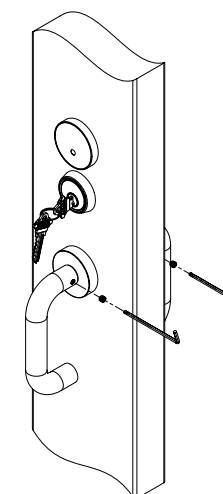
NOTE: When battery power is low, remove interior plate cover by pushing down on ball socket at top of plate. Slide interior cover over lever in order to access battery pack. All four AA batteries should be replaced.

Step 15: Install Thumbturn



Align thumbturn set screw to groove of spindle. Tighten set screw with Allen Key.

Step 16: Tighten Lever



Tighten the set screws of levers with Allen Key.