

This exploded view diagram illustrates the components of the Yale YMC6000 lock assembly. The main components shown are:

- Lock Body:** The central vertical component with a handle and a keyhole.
- Handle:** The long, vertical lever on the left side of the lock body.
- Mounting Plate:** The rectangular plate on the right side of the lock body.
- Internal Components:** Various screws, bolts, and internal mechanisms (like the cylinder and bolt) are shown in their relative positions for assembly.

Broadway 1 Piece Escutcheon with Keypad

PM-ISISTH-12
V20250414

Inside Trim

Inside Cover Plate

Installation Plate w/
Mounting Bracket at
5-1/2" CTC

Outside Trim

TLS Tubular Latch and Strike

BT Deadbolt Latch and Strike

Cylinder

Collar

Thumbturn

Thru-Bolt Cap Assembly

Allen Key

2x
M5X50mm
Machine Screws

2x
M4X35mm
Machine Screws

5x
M4X20mm
Machine Screws

Release Key

Metal Door Edge DPS

Metal Door Jamb DPS

Wood Door Edge DPS

Wood Door Jamb DPS

(Optional)

(Optional)

(Optional)

(Optional)

Attach the faceplate with the provided screw packs using a Phillips screwdriver.

METAL DOOR

WOOD DOOR

Thread the wire into the hole opening of the door. Pull the wire from the inside of the door through the opening of the door prep.

Use the screws provided and install the strike plates for the deadbolt and latch.

METAL FRAME

DOOR

Use the screws provided and install the strike plates for the deadbolt and latch.

Insert the 8x8x28mm spring spindle into the square hole on Zinc-Alloy Gear, then insert the gear into the lower hole prep. The spring spindle needs to insert into the tubular latch.

Technical drawing of the door assembly. The main drawing shows the door with the handle and lock components. The handle is labeled '1' and the lock is labeled '2'. The door is shown in a closed position. To the right of the main drawing, there are two detailed views of the handle and lock components. The top view shows the handle and lock components from a side perspective. The bottom view shows the handle and lock components from a top-down perspective.

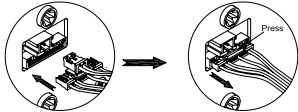
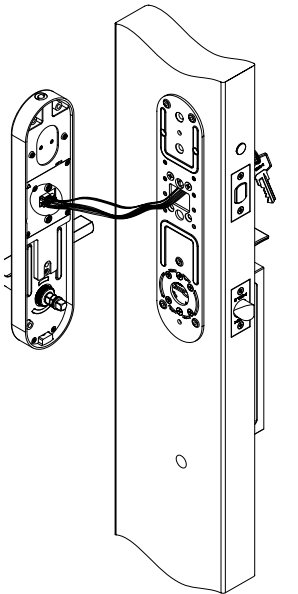
Align the two mounting bracket posts with the tubular deadbolt latch. Ensure the metal bracket on the interior sub-plate is inserted into the lower hole prep.

Press and release the thumb lever on the outside trim to ensure the latch bolt can be retracted. If the thumb lever does not rebound smoothly, re-align the outside trim.

Diagram illustrating the removal of the door handle assembly. A screwdriver is shown removing the screws holding the handle. A key is shown inserted into the lock cylinder. Cross-sections A-A and B-B are indicated.

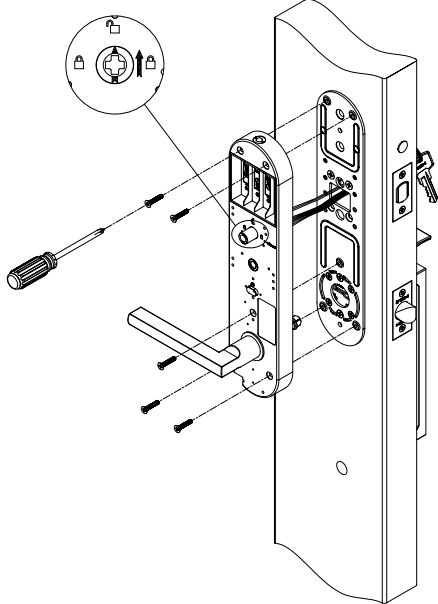
Set the outside tailpiece to the vertical position **WITHOUT** using the keys. See B-B.

Step 8: Connect Wire(s) to Interior Trim



Firmly plug the wire(s) into the socket of the inside plate. If DPS is not installed, only connect the outside escutcheon wire. There is an audible “click” when the wire is properly inserted.

Step 9a: Install Interior Subplate



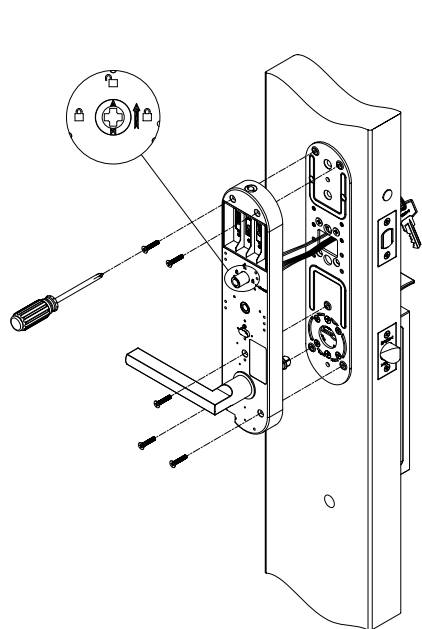
Pass the wire(s) through the hole of the sub-plate into the door before mounting the inside plate.

Insert and tighten (5) M4X20mm screws to the sub-plate. Rotate the thumbturn post so that the arrow is pointing left or right towards the locked icon.

NOTE: Make sure to pass the wires through the wire hole and into the door before tightening the sub-plate to avoid pinching or cutting the wire with the sub-plate.

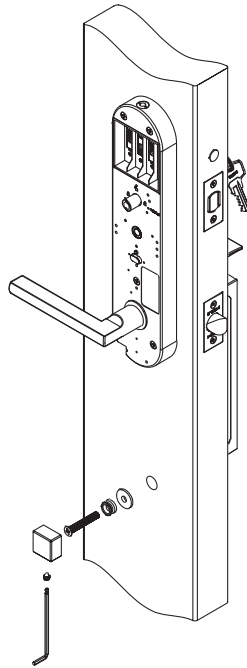
WARNING: Motor initial setting requires the deadbolt to be in the retracted position.

Step 9b: Install Interior Subplate



Important! Turn the arrow of the inside plate spindle to the unlocked icon position as shown. The arrow on the spindle should point up.

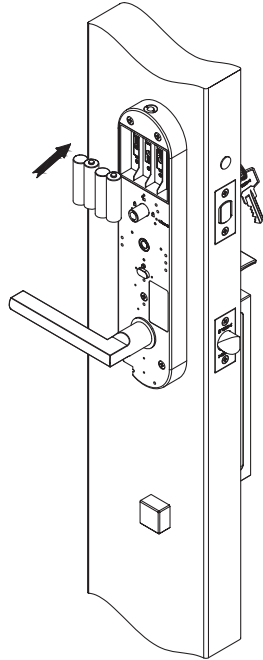
Step 10: Install the bottom thru-bolt cap



Place the metal adapter and stainless steel washer onto the M6X40mm thru-bolt and insert it into bottom bolt sleeve hole and then tighten.

Mount the thru-bolt cap onto the metal adapter. Use the Allen key to tighten the set screw after alignment.

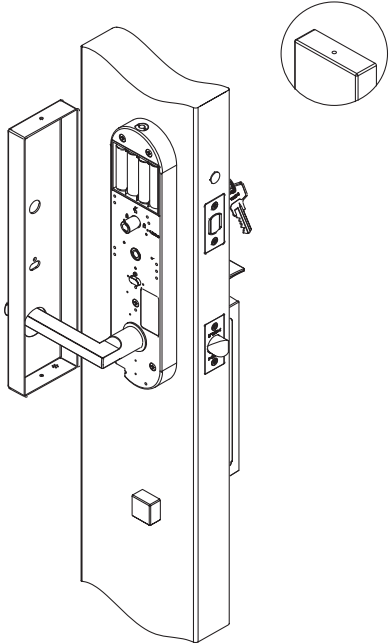
Step 11: Installing Batteries



Ensure that the deadbolt is in the retracted position before installing (4) AA batteries. Align the batteries to the correct polarity in the compartment.

NOTE: After a short delay, the lock will activate with audio and light confirmation.

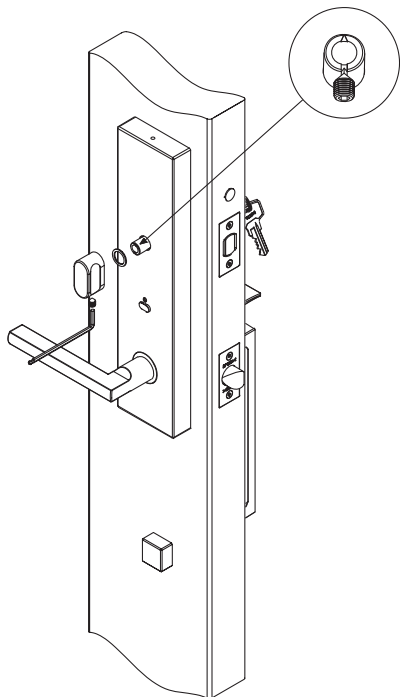
Step 12: Mounting Interior Cover Plate



Slide the interior cover plate over the lever. Push it onto the inside sub-plate and click the interior cover plate into place. Ensure the cover plate is securely attached by the ball bearing on top of the escutcheon.

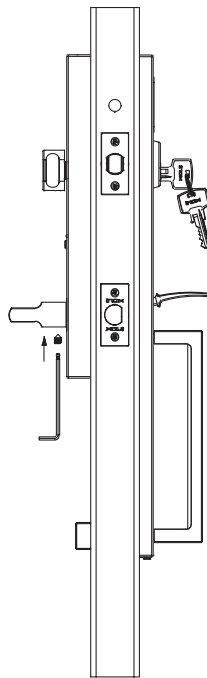
When the batteries are low or need to be replaced, first remove the thumbturn from the inside escutcheon, then slide the cover plate over the lever to access the batteries pack. Replace all batteries at the same time.

Step 13: Installing Thumbturn



Place the clear washer onto the thumbturn hub. Align the thumbturn set screw to the groove of the spindle. Tighten the set screw using the Allen key.

Step 14: Tighten Lever



Secure the lever on inside of the door by tightening the set screw with the Allen key.

